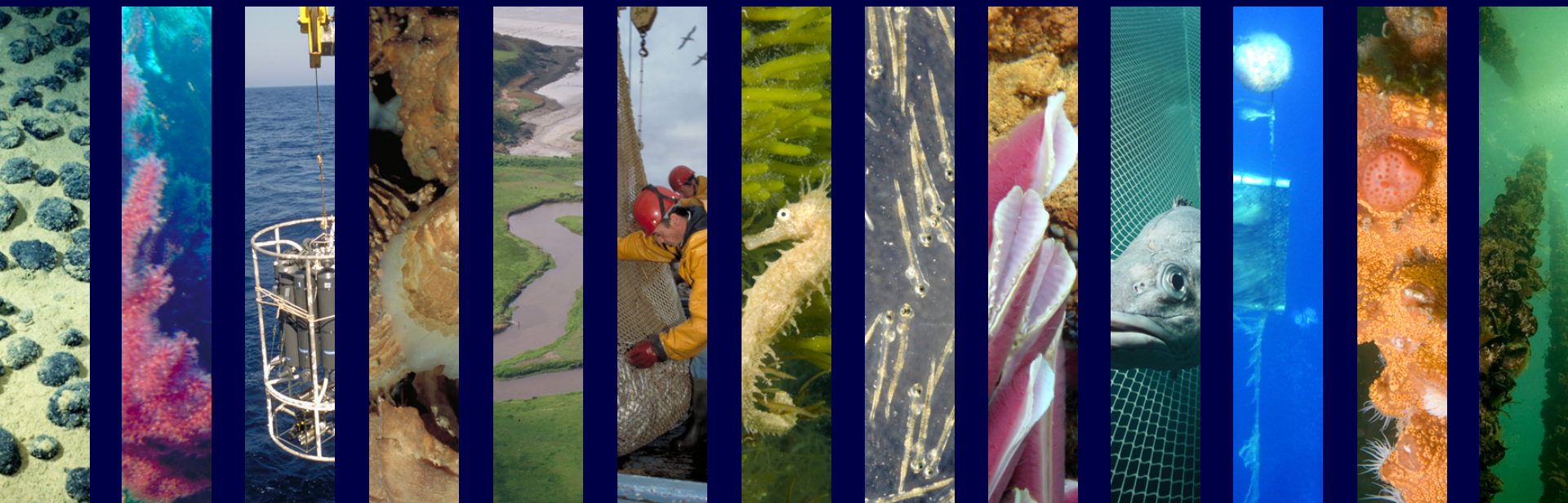


Ifremer

*French Research Institute
for the Exploitation of the Sea*



The Ifremer Center in Brest



Ifremer's missions

■ *Ifremer's missions are to conduct and promote basic and applied research, make expert assessment reports and take action for technological and industrial development intended to :*

- ◆ *Identify, evaluate and enhance marine resources and enable their sustainable exploitation*
- ◆ *Improve methods of monitoring, forecasting trends, protecting and enhancing marine and coastal environments*
- ◆ *Encourage the economic development of maritime activities*

Ifremer's activities

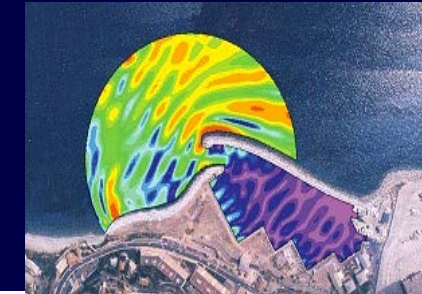
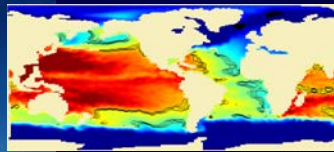
- *Applied research, initiated by the societal demand or by scientific needs*
- *Monitoring and expertise for public interest*
- *Managing large facilities and developing technology*

Delivered through 4 scientific departments :

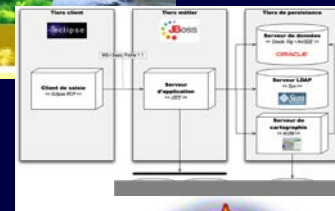
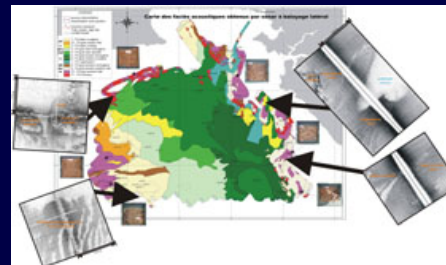
- *Biological resources and environment*
- *Physical resources and deep sea ecosystems*
- *Oceanography and ecosystem dynamics*
- *Marine and digital infrastructure*

Physical oceanography , remote sensing

Départements/Brest



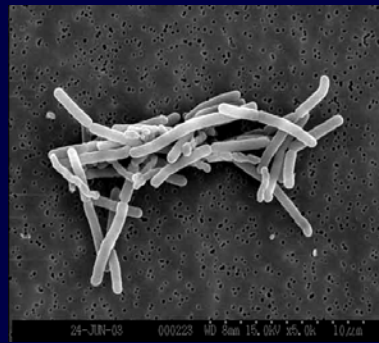
Dynamics of coastal environment



Information technology and marine data



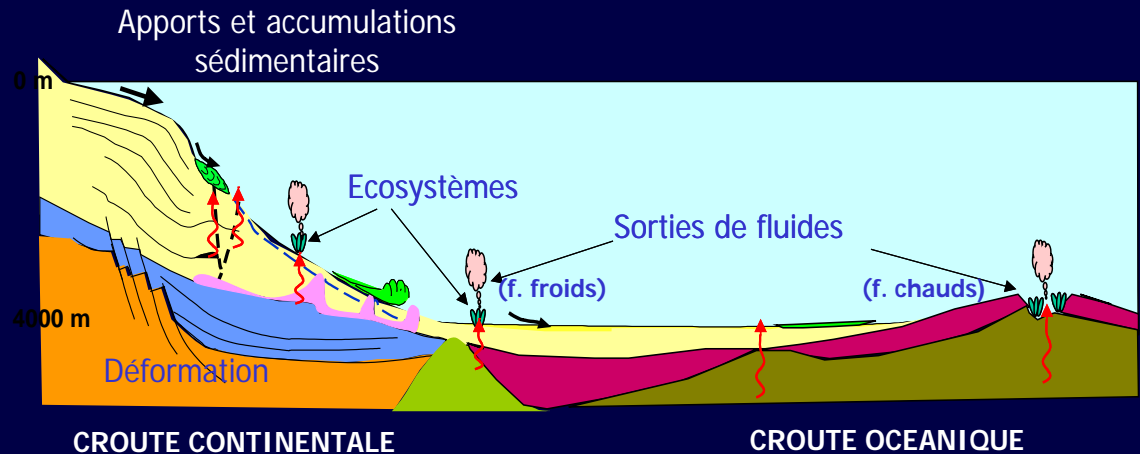
Marine Biotechnologies

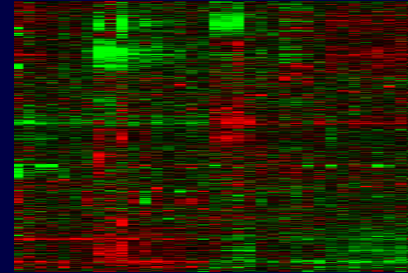
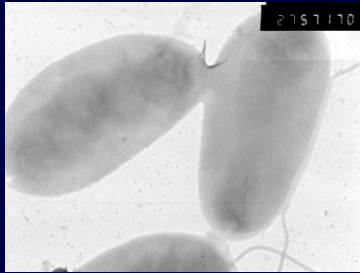


Deep sea ecosystems

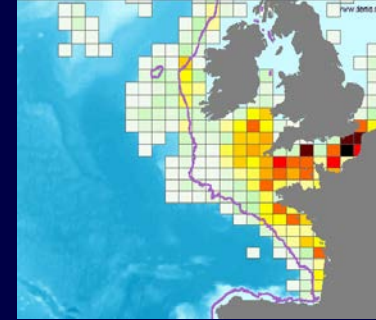


Marine geosciences





Physiology of marine organisms



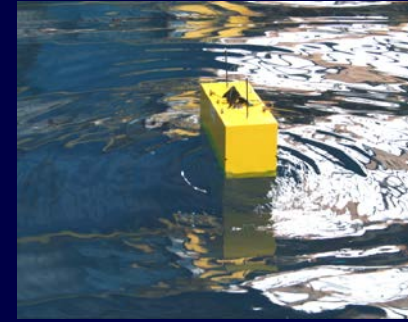
Fisheries science and technology



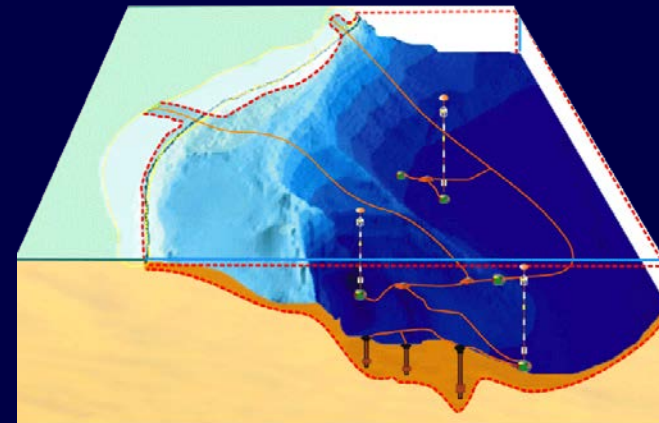
Marine Economics

Départements/Unités

Testing and technology
research

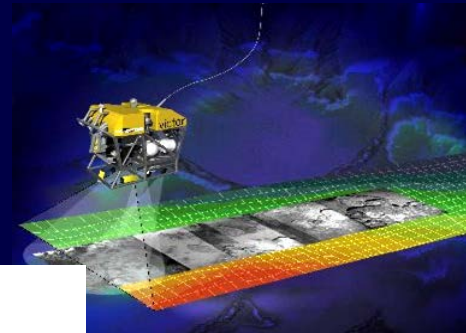


Monitoring systems



Departements/Brest

*Research vessels, on board
systems*



Ocean Research Fleet

■ *Ifremer manages a large part of the French ocean research fleet for the benefit of the French scientific community*

■ *4 blue ocean vessels*

◆ *L'Atalante
(Commissioned in 1990
/ Length : 84,6 m)*

◆ *Thalassa (1996 /
73,65 m)*

◆ *Le Suroît (1975 /
modernization in 1999,
56,34 m)*

◆ *Pourquoi pas ? (2005
/ 107 m)*



Thalassa

Underwater systems

■ *Ifremer has an entire range of underwater systems operational for the scientific community*



• *Nautile (manned submersible, commissioned in 1984)*



• *Victor 6000 (remotely operated vehicle, commissioned in 1999)*



• *Aster (2 autonomous AUV, commissioned in 2004)*